

5/11/25 – 4th Sunday of Easter	
Entrance	I Know That My Redeemer Lives
Responsorial	
Alleluia	
Offertory	Hail Mary, Gentle Woman
Communion	Come To Me
Recessional	How Can I Keep From Singing

To Listen to recordings of the music:

1. Go to www.johnsimon.net.
2. Click on the **Listen** link at the top of the website page.
3. On the “Listen” page, click on the **Listen** button under “*St. Francis Solano Choir*”.
4. Use the playback controls to listen to any song.

I KNOW THAT MY REDEEMER LIVES

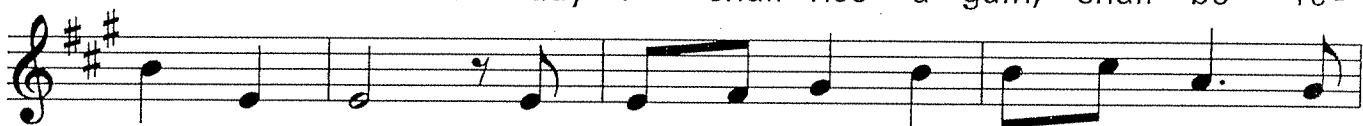
689

Acc #241 / CPC2 #345

Scott Soper



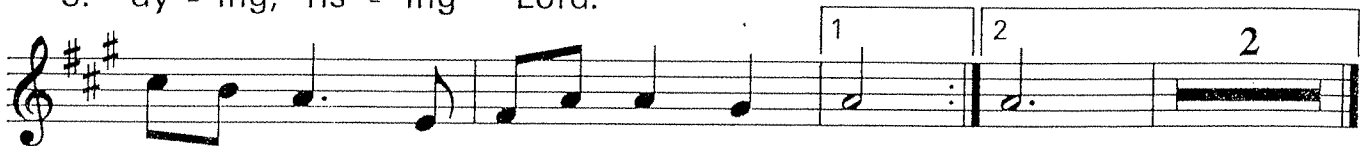
1. I know that my Re-deem-er lives, the One who
2. I know that I shall one day see the good-ness
3. The last day I shall rise a-gain, shall be re-



1. calls me home. I long to see God face - to - face, to
2. of the Lord, when God will wipe a - way our tears, and
3. made like God. My home shall be by God's own side, the



1. see with my own eyes. I know that my Re-
2. death will be no more.
3. dy - ing, ris - ing Lord.



deem-er lives, that I shall rise a - gain. gain.

Text: Based on Job 19; Psalm 27; Isaiah 25. Text and music © 1990, OCP. All rights reserved.

GLORY GLORY

JOHN SIMON (c) 2013

A- A-/G E- D

Glo - ry glo - ry glo - ry to God in the high - est

A- A-/G E- D G/B A

4 and on earth peace to peo - ple of good will

B- B-/A E-/G D/A A D D/F#

7 We praise you we bless you we a - dore you, we

G F#/A# B- D/A G D/F#

10 glo - ri - fy you we give you thanks for your great glo - ry

E-7 D/F# G A E-7 D/F#

13 Lord God, heav - en - ly King O God,

G A F#-7 E/G# A B

16 al - migh - ty Fa - ther Lord Je - sus Christ On - ly Be - got - ten Son

F#-7 E/G# A F#7/A# B- G

19 Lord God Lamb of God Son of the Fa - ther you take a - way the

D/F# F#7 B- B- /A

22 sins of the world, have mer - cy on us

GLORY GLORY

25 **G** **D/F#** **F#7** **B-**
 you take a - way the sins of the world re - ceive our prayer

28 **B-/F#** **G** **B-/F#** **F** **E-** **D**
 You are seat - ed at the right hand of the

31 **D/C** **C** **A**
 Fa - - - ther have mer - cy on us For

34 **A-** **A-/G** **E-** **D** **A-** **A-/G**
 you a - lone are the Ho - ly One you a - lone are the

37 **E-7** **A** **B-7** **C** **G/B**
 Lord you a - lone are the Most High

40 **D** **SLOWER** **A-7/D** **G** **F#** **B-** **E^b/B^b** **D/A** **C#7/G#**
 Je - sus Christ with the Ho - ly Spi - rit

43 **G** **F#-/A** **B-** **D/C** **C** **D**
 in the glo - ry of God the Fa - ther, A - men

FOURTH SUNDAY OF EASTER — C

Psalm 100: 1-2, 3, 5 [51]

RESPONSE: Cantor/All (♩. = ca. 40) [or: Alleluia.]

Capo 3: (D) (A sus4) (C) (G) (Bm) (C) (Am7) (G) (D)
 F Csus4 Eb Bb Dm Eb Cm7 Bb F

We are his peo - ple, the sheep of his flock, the sheep of his flock.

VERSES: Cantor or SATB

(D) (G/B) (Am7) (Em/G)
 F Bb/D Cm7 G m/Bb

1. Sing joyfully to the LORD, all you lands; serve the LORD with gladness;
 2. Know that the LORD is God; he made us, his we are;
 3. The LORD is good: his kindness en - dures for - ever,

(Cmaj7) (D)
 Ebmaj7 F

1. come before him with joy - ful song.
 2. his people, the flock he tends.
 3. and his faithfulness, to all gen - er - ations.

Music © 2001, John Schiavone. Published by OCP Publications. All rights reserved.

Gospel Acclamation for this celebration may be found on page 233.
 A separate assembly response may be found on page 277.

Gospel Acclamation: John 10:14

Acclamation: (Organ/SATB) No. VII

Optional Descant

Al - le - lu - ia, al - le - lu - ia, al - le - lu - ia.

D G/B Asus4 A G Dadd9 D G/B A7/C# D

Al - le - lu - ia, al - le - lu - ia, al - le - lu - ia.

Verse: (Cantor or SATB)

I am the good shep - herd, says the Lord;

I know my sheep, and mine know me.

D A/C# Bm Bm/A G Asus4 A

Em7 F#m/A Bm G G/B Asus4 A

Music: Owen Alstott, © 1977, 1990, OCP. All rights reserved.

Hail Mary: Gentle Woman


INTRO: (Solo)



Hail Ma - ry, full of grace, the Lord




is with you. Bless-ed are you a-mong



wom-en, and blest is the fruit of your womb, Je - sus.



Ho-ly Ma - ry, Moth-er of



God, pray for us sin - ners now and



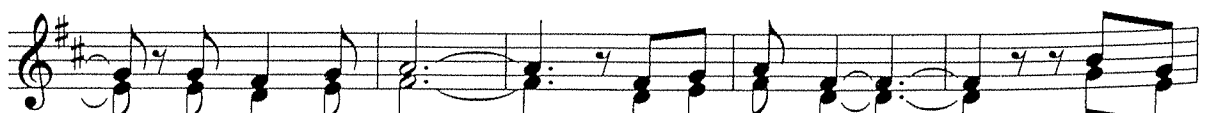
at the hour of death. A - men.

♩ REFRAIN:

Harmony



Gen-tle wo-man, qui-et light, morn-ing star,



so strong and bright, gen-tle Moth-er, peace-ful

dove, teach us wis-dom; teach us love. *Fine*

VERSE 1:

1. You were cho-sen by the Fa-ther; you were cho-

1. sen for the Son. You were cho-sen from all

1. wom-en and for wom-an, shin-ing one. *D.S.*

VERSE 2:

2. Bless-ed are you a-mong wom-en, blest in turn

2. all wom-en, too. Blest are they with peace-ful

2. spir-its. Bless-ed they with gen-tle hearts. *D.S. al fine*

HOLY

Soprano
Alto

mf

Ho - ly, Ho - ly, Ho - ly Lord

Tenor
Bass

mf

God of hosts.

cresc.

God of, God of hosts. Heav - en and earth are full of your

God of hosts.

cresc.

f

glo - ry. Ho - san - na, ho - san - na, ho -

f

1

rit. last time *dim.* *mf* *cresc.*

san - na in the high - est. Bless - ed is he who

rit. last time *dim.* *mf* *cresc.*

Final

name of the Lord.

f *dim.*

comes in the name of, the name of the Lord. Ho - high - est.

name of the Lord.

f *dim.*

WHEN WE EAT THIS BREAD

D
Em/D
A/D
Em/D
D
A7/D
Bm7
D/A

mf
 Soprano
 Alto
 Tenor
 Bass
mf

When we eat this Bread and drink this Cup, we pro -

G
A
Bm7
D/A
Gadd9
A7

your Death, O Lord, come a -
 claim your Death, pro - claim your Death, un - til you come a
 your Death, O Lord, a -

Dadd9/F#
Bm7
Gadd9
A6
A7
D

rit.
 gain, gain, come a - gain, un - til you come a - gain.
 gain, gain, come a - gain, *rit.*

AMEN

Musical score for Soprano, Alto, Tenor, and Bass parts. The key signature is two sharps (F# and C#). The Soprano part starts with a forte (*f*) dynamic and includes the lyrics "A - men! A - men! A". The Alto part includes the lyrics "A - men! A - men! A". The Tenor part includes the lyrics "A - men! A - men! A". The Bass part includes the lyrics "A - men! A - men! A".

Musical score for Soprano and Bass parts. The key signature is two sharps (F# and C#). The Soprano part includes the lyrics "men! A - men!". The Bass part includes the lyrics "men! A - men!".

Come to Me

REFRAIN: *Moderately*

Come to me, all who la - bor and are heav - y bur - dened,

C *Am* *E*

and I shall give you rest. Take up my yoke and

F *G7* *C*

learn from me, for I am meek and hum - ble of

F *C* *Am* *E* *F*

heart, and you'll find rest for your souls.

G7 *Am* *F* *C*

Am Em Am F

Yes, my yoke is eas - y and my bur -

Gsus G C F C

den is light.

1-5 to Verses Final Fine

VERSES:

C Am C Am

1. You, God, are my shep-herd. I shall nev-er be in need.
 2. Be - side peace-ful wa - ters you re - store ___ my true self;
 3. Should I be sur - round - ed by the shad - ows of death,
 4. Be - fore my deep hun - ger you spread out ___ your ___ feast.
 5. Pur - sue me, O God, ___ with your fa - thom-less love.

F D.C.

1. Fresh and green are the mead-ows where you give me ___ rest.
 2. There you lead me to walk ___ in the path of new life.
 3. I will not fear, for you are stead - fast in your ___ love.
 4. My ___ skin you a - noint ___ with the rich - est of oil.
 5. In your tent let me dwell ___ all the days of my life.

How Can I Keep from Singing

VERSES:

Soprano/Melody

Musical notation for Soprano/Melody, first system. Treble clef, 4/4 time signature, key signature of one flat (Bb). The melody consists of a series of quarter notes: G4, A4, Bb4, C5, Bb4, A4, G4, F4, E4, D4.

- | | | | | | | | | | |
|----|---------|------------|-------------|------------|--------|------------|---------|--------|---|
| 1. | My | life | flows | on | in | end - less | song; | A - | |
| 2. | Through | all | the | tu - mult | and | the | strife, | I | |
| 3. | What | though | the | tem - pest | 'round | me | roar, | I | |
| 4. | When | ty - rants | trem - ble, | sick | with | fear, | And | I | |
| 5. | The | peace | of | Christ | makes | fresh | my | heart, | A |

Alto

Musical notation for Alto, first system. Treble clef, 4/4 time signature, key signature of one flat (Bb). The melody consists of a series of quarter notes: G4, A4, Bb4, C5, Bb4, A4, G4, F4, E4, D4.

1-5. Oooh, _____

Tenor

Musical notation for Tenor, first system. Bass clef, 4/4 time signature, key signature of one flat (Bb). The melody consists of a series of quarter notes: G3, A3, Bb3, C4, Bb3, A3, G3, F3, E3, D3.

Bass

Musical notation for Soprano/Melody, second system. Treble clef, 4/4 time signature, key signature of one flat (Bb). The melody consists of a series of quarter notes: G4, A4, Bb4, C5, Bb4, A4, G4, F4, E4, D4.

- | | | | | | | | | | |
|----|-------------|---------|-----------------------|-------------|-------------|--------|---------|------------|-------------|
| 1. | bove | earth's | lam - en - ta - tion. | I | hear | the | real | though | |
| 2. | hear | that | mu - sic | ring - ing; | It | sounds | and | ech - oes | |
| 3. | hear | the | truth | it | liv - eth. | What | though | the | dark - ness |
| 4. | hear | their | death | knells | ring - ing; | When | friends | re - joice | both |
| 5. | foun - tain | ev - er | spring - ing. | All | things | are | mine | since | |

Musical notation for Alto, second system. Treble clef, 4/4 time signature, key signature of one flat (Bb). The melody consists of a series of quarter notes: G4, A4, Bb4, C5, Bb4, A4, G4, F4, E4, D4.

1-5. Oooh, _____

Oooh, _____

Musical notation for Tenor, second system. Bass clef, 4/4 time signature, key signature of one flat (Bb). The melody consists of a series of quarter notes: G3, A3, Bb3, C4, Bb3, A3, G3, F3, E3, D3.

1. far - off hymn That hails a new cre - a - tion.
 2. in my soul; How can I keep from sing-ing?
 3. 'round me close, Songs in the night it giv-eth.
 4. far and near, How can I keep from sing-ing?
 5. I am his; How can I keep from sing-ing?

1-5. (Oooh,) _____

That hails a new cre - a - tion.
 How can I keep from sing-ing?
 Songs in the night it giv-eth.
 How can I keep from sing-ing?
 How can I keep from sing-ing?

REFRAIN:

Soprano/Melody in-most calm, While to that rock I'm
 Alto No storm can shake my in - most calm, While to that rock
 Tenor
 Bass

cling-ing. heav-en and earth,
 I'm cling-ing. Since love is Lord of heav - en and earth,
 heav'n and earth,

sing-ing?
 How can I keep from sing - ing?
 How can I keep from sing - ing?